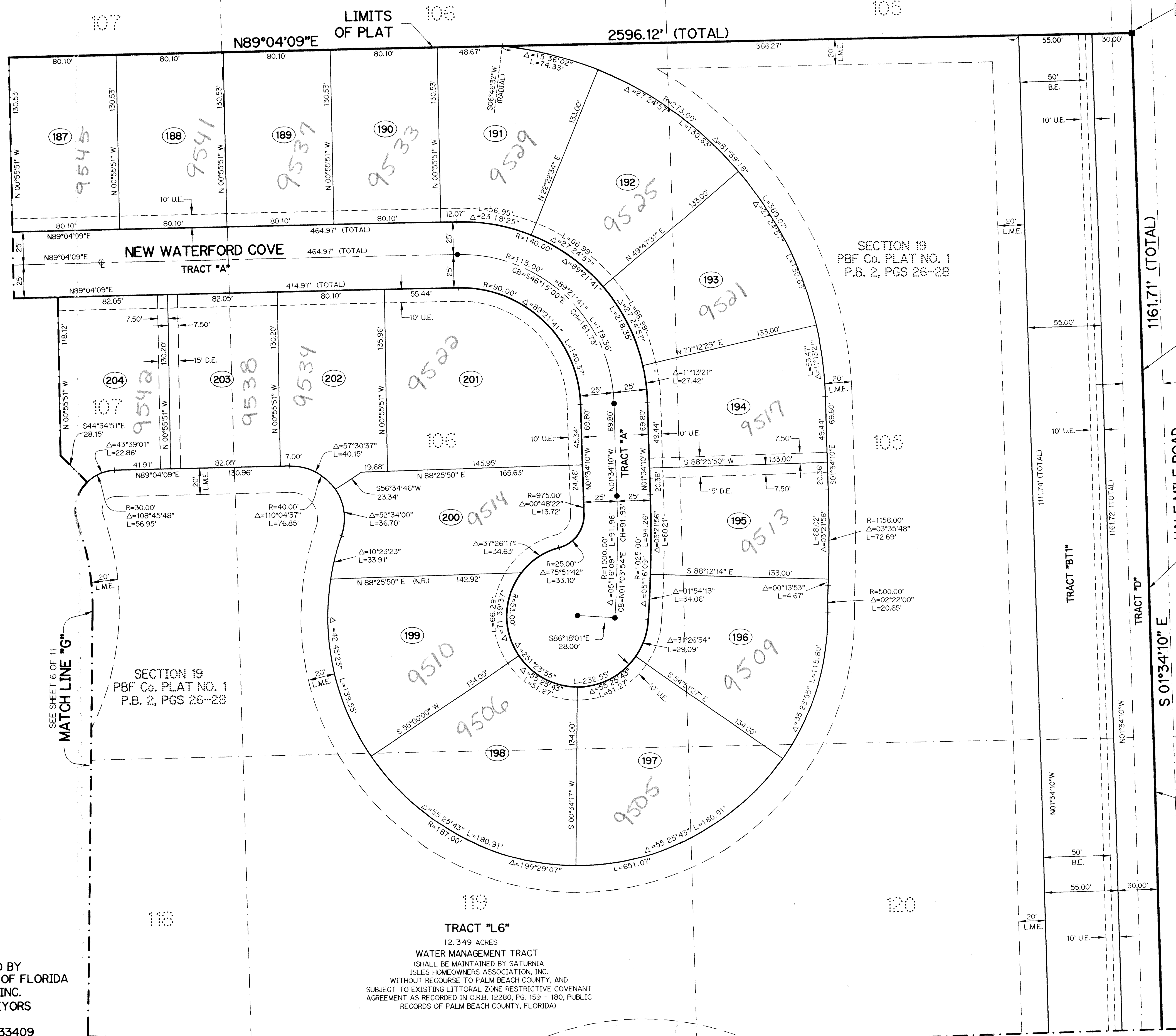


# SATURNIA ISLES - PLAT ONE

114

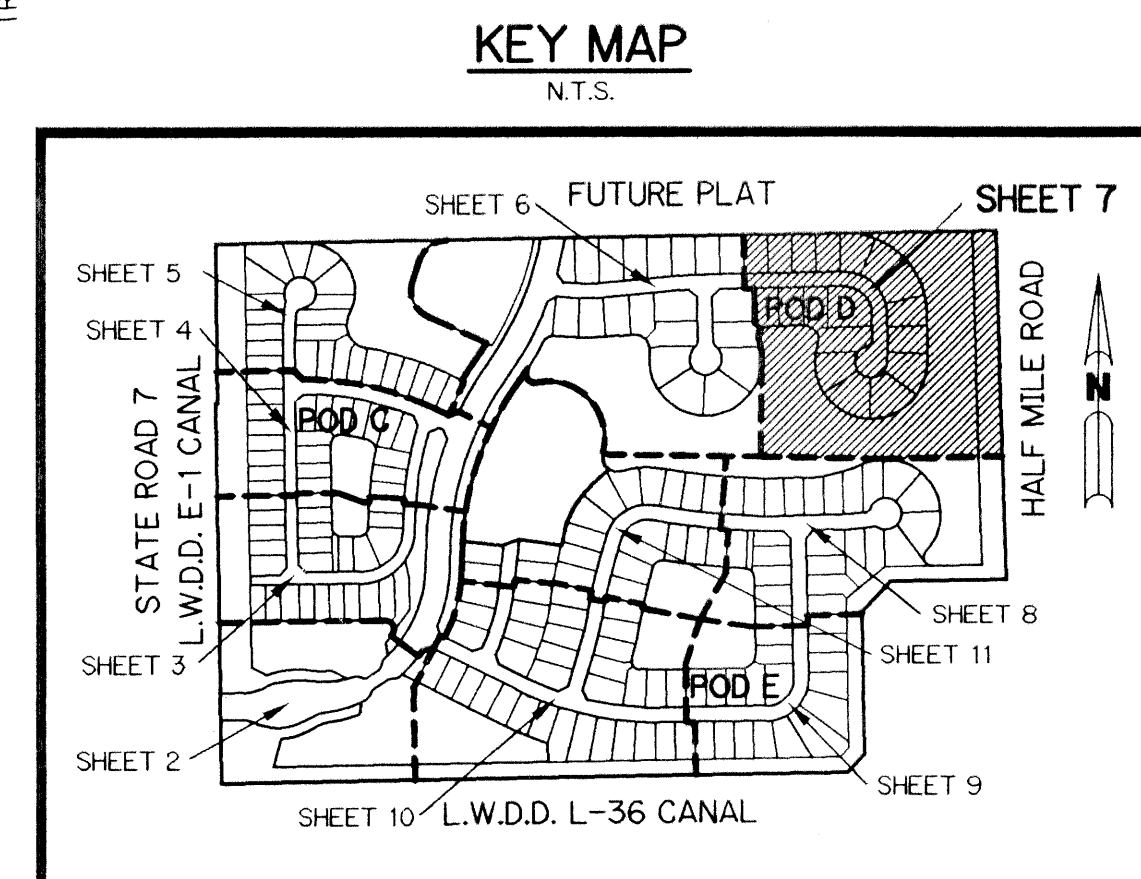
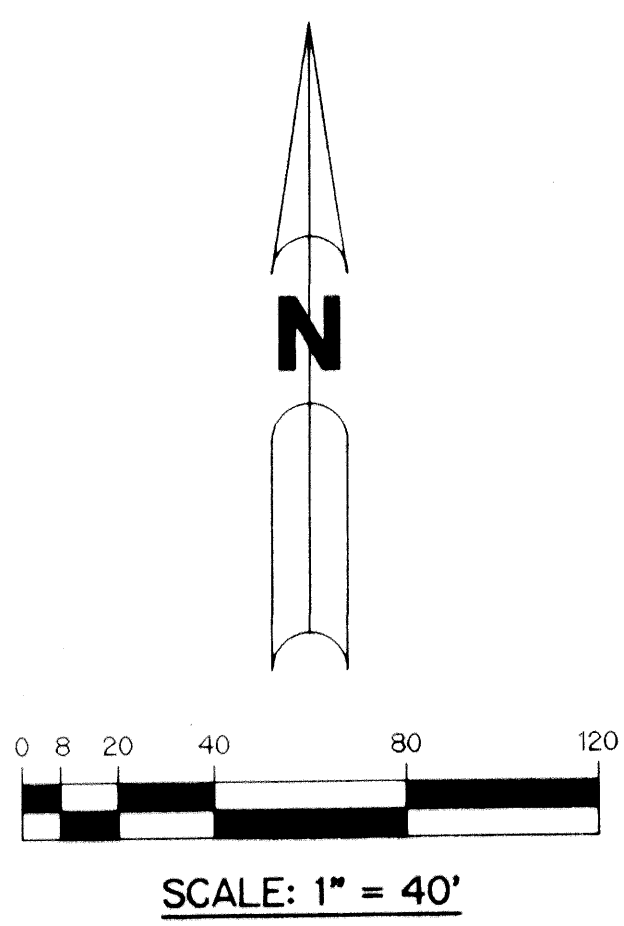
BEING A REPLAT OF TRACTS 113 THROUGH 120 AND A PORTION OF TRACTS 105 THROUGH 108, SECTION 19, TOWNSHIP 46 SOUTH, RANGE 42 EAST AND A PORTION OF TRACTS 10 THROUGH 16, SECTION 30, TOWNSHIP 46 SOUTH, RANGE 42 EAST, PALM BEACH FARMS COMPANY PLAT NO. 1 AS RECORDED IN PLAT BOOK 2, PAGES 26 THROUGH 28 TOGETHER WITH BLOCKS 2 THROUGH 5 AND A PORTION OF BLOCKS 1 AND 6, MILLER'S PARK UNIT 2 AS RECORDED IN PLAT BOOK 4, PAGE 75 TOGETHER WITH ROAD RIGHT-OF-WAY ABANDONED PER OFFICIAL RECORD BOOK 12389, PG. 1259, ALL OF THE PUBLIC RECORDS OF PALM BEACH COUNTY, FLORIDA LYING IN SECTIONS 19 AND 30, TOWNSHIP 46 SOUTH, RANGE EAST.

SHEET 7 OF 11 DECEMBER, 2000



**NOTE:**  
COORDINATES SHOWN ARE GRID COORDINATES  
DATUM = NAD 83 (1998 ADJUSTMENT)  
ZONE = FLORIDA EAST ZONE  
LINEAR UNIT = U.S. SURVEY FEET  
COORDINATE SYSTEM = 1983 STATE PLANE TRANSVERSE MERCATOR PROJECTION  
ALL DISTANCES ARE GROUND UNLESS OTHERWISE NOTED  
SCALE FACTOR = 1.0000190  
PLAT BEARING = GRID BEARING  
NO ROTATION

- LEGEND:**
- - SET PERMANENT REFERENCE MONUMENT, L.B. #6674
  - - FOUND PERMANENT REFERENCE MONUMENT, L.B. #6674
  - - SET PERMANENT CONTROL POINT, L.B. #6674
  - - FOUND PERMANENT CONTROL POINT, L.B. #6674
  - Δ - DELTA ANGLE
  - ABAND. - ABANDONED
  - B.E. - BUFFER EASEMENT
  - CB - CHORD BEARING
  - CH - CHORD DISTANCE
  - C - CENTERLINE
  - D.B. - DEED BOOK
  - D.E. - DRAINAGE EASEMENT
  - L - ARC LENGTH
  - L.A.E. - LIMITED ACCESS EASEMENT
  - L.M.A.E. - LAKE MAINTENANCE ACCESS EASEMENT
  - L.M.E. - LAKE MAINTENANCE EASEMENT
  - L.W.D.D. - LAKE WORTH DRAINAGE DISTRICT
  - N.R. - NOT RADIAL
  - N.T.S. - NOT TO SCALE
  - O.E. - OVERHANG EASEMENT
  - O.R.B. - OFFICIAL RECORD BOOK
  - P.B. - PLAT BOOK
  - P.G.S. - PAGES
  - P.C.C. - POINT OF COMPOUND CURVATURE
  - P.C. - POINT OF CURVATURE
  - P.I. - POINT OF INTERSECTION
  - P.T. - POINT OF TANGENCY
  - P.S.M. - PROFESSIONAL SURVEYOR AND MAPPER
  - R - RADIUS
  - RAD. - RADIAL
  - R/W - RIGHT-OF-WAY
  - S.D.E. - SWALE DRAINAGE EASEMENT
  - S.T. - SURVEY TIE
  - (TYP.) - TYPICAL
  - U.E. - UTILITY EASEMENT
  - P.B.F.C. - PALM BEACH FARMS COMPANY PLAT NO. 1 (P.B. 2, PGS. 26 - 28)
  - N 737648.0171  
E 905258.2326 - DENOTES STATE PLANE COORDINATES
  - 120 - DENOTES TRACT NUMBER PER PALM BEACH FARMS COMPANY PLAT NO. 1 (PGS. 26-28)



THIS INSTRUMENT PREPARED BY  
PERRY C. WHITE, P.S.M. 4213, STATE OF FLORIDA  
LAWSON, NOBLE AND WEBB, INC.  
ENGINEERS PLANNERS SURVEYORS  
420 COLUMBIA DRIVE  
WEST PALM BEACH, FLORIDA 33409  
LB-6674

**TRACT "L6"**  
12.349 ACRES  
WATER MANAGEMENT TRACT  
(SHALL BE MAINTAINED BY SATURNIA ISLES HOMEOWNERS ASSOCIATION, INC. WITHOUT RECOURSE TO PALM BEACH COUNTY, AND SUBJECT TO EXISTING LITTORAL ZONE RESTRICTIVE COVENANT AGREEMENT AS RECORDED IN O.R.B. 12280, PG. 159 - 180, PUBLIC RECORDS OF PALM BEACH COUNTY, FLORIDA)